

Platform Datasheet

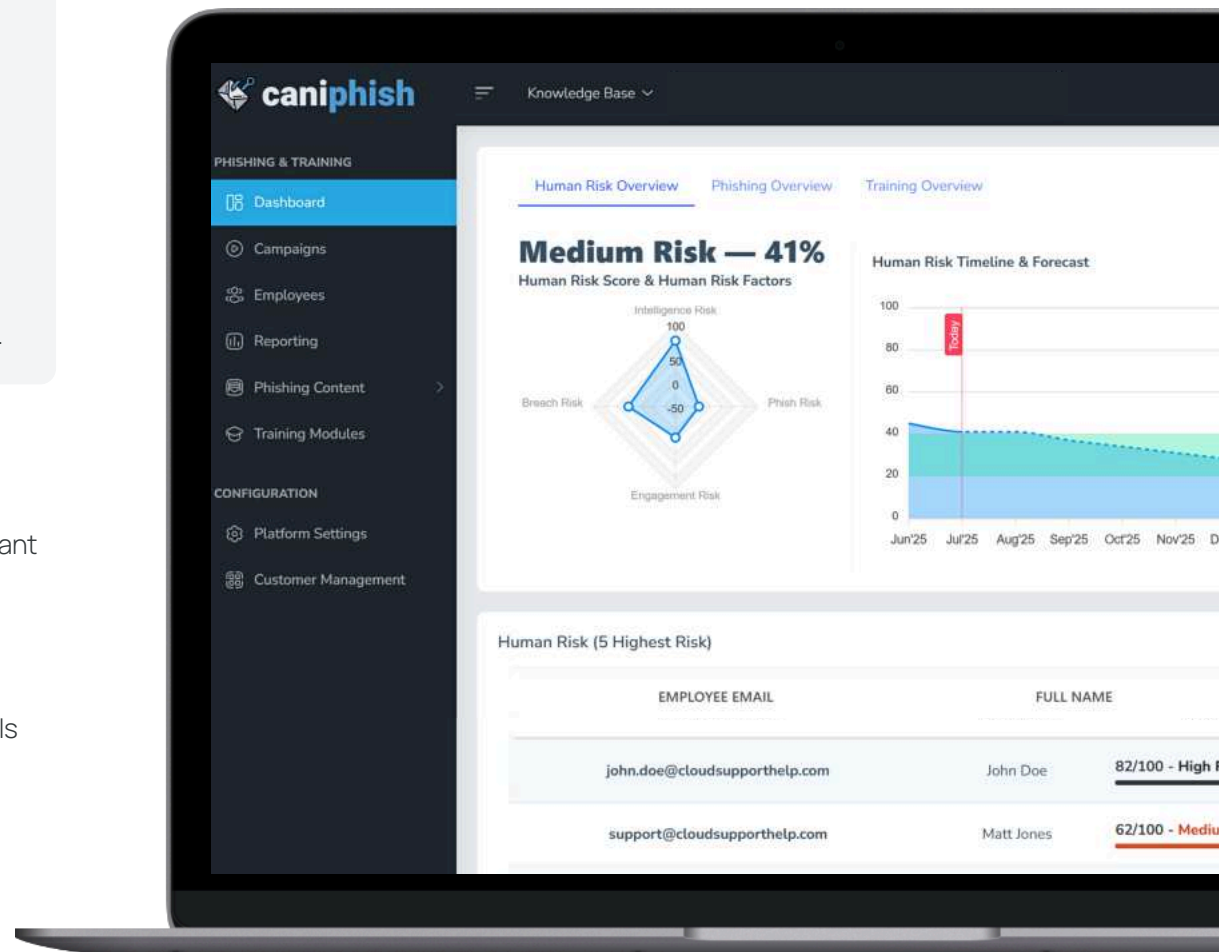
Cost-effective. Customizable. Powerful.

CanIphish was founded with the goal of making cyber security training accessible to every organization. Our platform provides ultra-realistic phishing simulations and high-quality security awareness training, all at a fraction of the cost of our competitors.

We've eliminated the traditional aggressive sales approach and run a leaner business without an army of salespeople. We pass these savings to our customers. Our platform is our sales tool and it speaks for itself. We offer a well-equipped and perpetual free tier that is the perfect testing ground for anyone looking to get started.

Key Features

- ✓ Managed Mail Servers
- ✓ Managed Phishing Websites
- ✓ Configurable Infrastructure
- ✓ Animated Training Videos
- ✓ Gamification
- ✓ Dark Web Monitoring
- ✓ Automated Reporting
- ✓ Single Sign-On (SAML)
- ✓ Conversational AI Phishing
- ✓ Multi-Factor Authentication
- ✓ Platform White-Labeling
- ✓ Entra ID & Google Workspace Integration
- ✓ SOC 2 Audited & GDPR Compliant
- ✓ Report Phish Add-On
- ✓ Sender Domain Spoofing
- ✓ Voice Phishing
- ✓ Managed Service Provider Tools
- ✓ Email Template Editor
- ✓ Training Module Editor
- ✓ Multi-Language Functionality
- ✓ Perpetual Free Tier
- ✓ Configurable Cloud Storage
- ✓ Human Risk Dashboard
- ✓ Security Awareness Program Generator



Industry-Leading Features & Benefits



Platform Benefits



Cost-Effective Security Awareness

Built from the ground up with a user-centric approach, CanIphish combines powerful functionality with simplicity, efficiency, and affordability—offering transparent, self-service pricing for organizations of all sizes.



Powerful, Fully Equipped Platform

Equipped with powerful features like Single Sign-On, Dark Web Monitoring, Automated Reporting, and Domain Spoofing, our fully managed infrastructure ensures your organization is primed for elevating its security awareness from day one.



No Technical Experience Required

CanIphish is designed with a focus on user-friendliness, ensuring ease of use without needing advanced technical skills. Supported by a detailed knowledge base, it empowers users to take control confidently.



Fresh Content & Regular Updates

We're always tuned in to the latest in cybersecurity trends and threats, regularly updating our content and functionality to keep it fresh and relevant. This ensures your organization stays ahead with the most current security awareness resources.



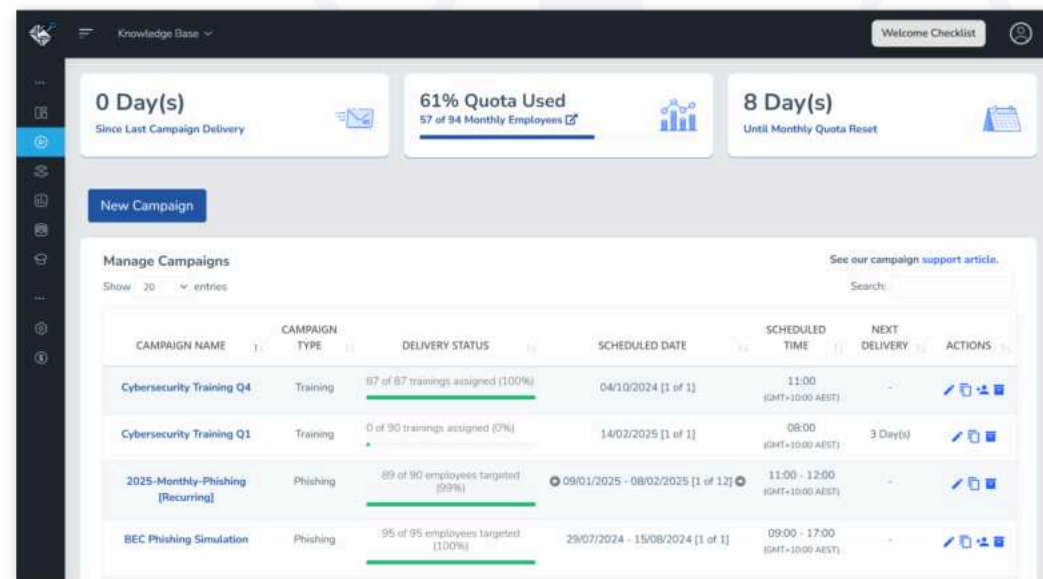
Subscription Flexibility

Choose from our flexible monthly or heavily discounted annual subscription plans to suit your organization's needs. Our subscription model is designed for easy management and adaptability.



Cybersecurity Training Without Borders

With advanced multi-language support, CanIphish offers content in 75 written and 29 spoken languages, enabling you to create campaigns tailored to your globally diverse workforce and deliver an inclusive cybersecurity training experience.



**SOC2
TYPE II
Audited**



**GDPR
COMPLIANT**

Realistic Phishing Simulations



Key Phishing Simulation Features



120+ Email Templates

Designed to simulate various real-life attack scenarios, these ultra-realistic phishing emails are an effective tool for preparing your employees for the threats they may encounter.



75+ Phishing Websites

Leverage our collection of phishing websites meticulously designed to replicate the appearance of genuine sites. These realistic simulations are designed to entice employees to interact with them.



AI-Powered Conversational Phishing

Our conversational phishing engine simulates emerging threats by replicating real-world email and voice phishing tactics, delivering immersive, multi-channel training to prepare users for modern cyberattacks.



Customizable Content

Enhance your experience with our customizable phishing content, or take it a step further by creating your own! Our platform offers flexibility and creativity in designing bespoke phishing tailored for your organization.



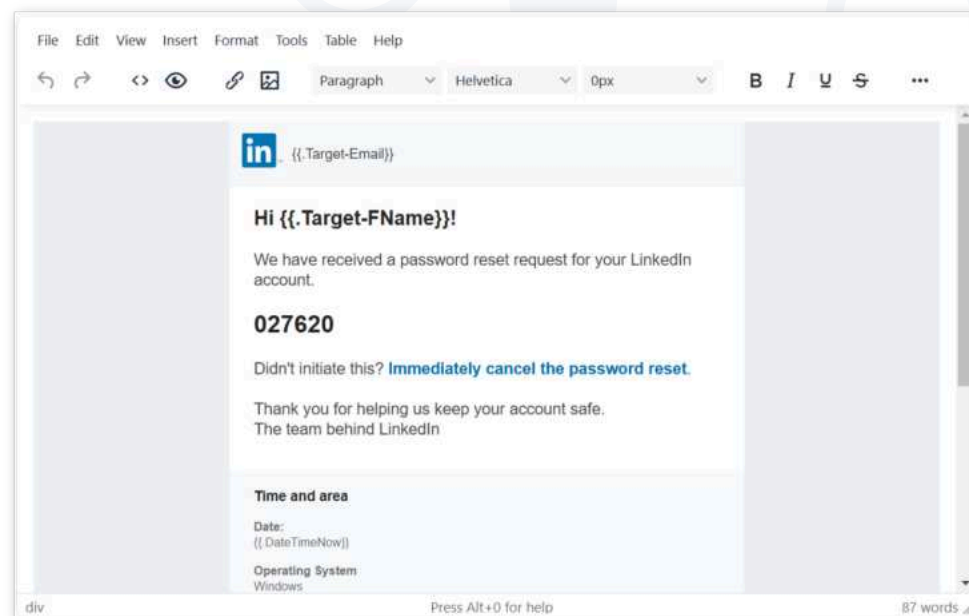
Sender Profiles & Domain Spoofing

Elevate your phishing simulations with custom sender profiles and domain spoofing capabilities. Create authentic-looking phishing campaigns that test and strengthen your organization's defenses against sophisticated threats.



Multi-Vector Attack Experience

Simulate a variety of threats with our diverse attack types. From website phishing and malicious attachments to conversational email and voice phishing, experience realistic scenarios that prepare your team for anything.



1.8M+

Phishing Emails Sent

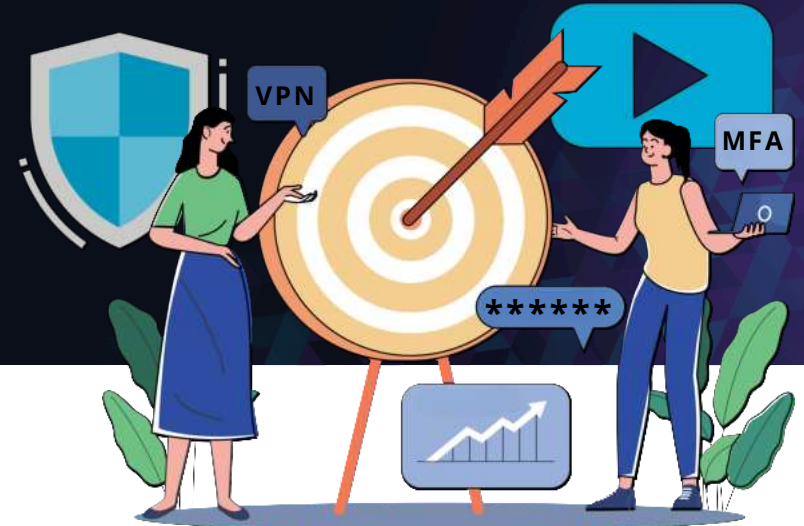
450K+

Employees Fell For
The Phish

120K+

Employees Reported
A Phishing Email

Interactive Security Awareness Training



Key Training Features



50 Micro-Learning Training Modules

Our expanding in-house collection features expertly designed training modules. Each includes a brief video and combines educational content with quiz-based learning.



On-The-Spot Learning

The most impactful learning opportunity occurs immediately after a user clicks on a phishing link. They are redirected to an interactive landing page that educates them on recognizing and avoiding future phishing attempts.



Customizable Training Modules

Design custom modules effortlessly with our intuitive training module editor. Create content that aligns with your organization's goals and deliver a personalized experience that truly resonates with your employees.



Gamification

CanIphish infuses education with an addictive mix of competition and accomplishment, turning it into an exciting adventure. Our approach, featuring leaderboards, badges, and certificates, effectively resolves user engagement issues.



Learner Dashboard

Employees have access to a personal dashboard where they can complete training modules, view their badges, check their training statistics, and download certificates of completion.



Human Risk Management

CanIphish meticulously tracks every employee interaction to build a comprehensive profile of their phishing risk, badge score, security IQ, and overall human risk. This data helps identify organizational vulnerabilities and strengths.



400K+

Active Learners
Worldwide

1K+

Organizations Trust
CanIphish

50+

Countries With
Active Users